



# ISC IQ I22

$U_w = 1,06 \text{ W/m}^2\text{K}^*$

## GLAZING UNIT

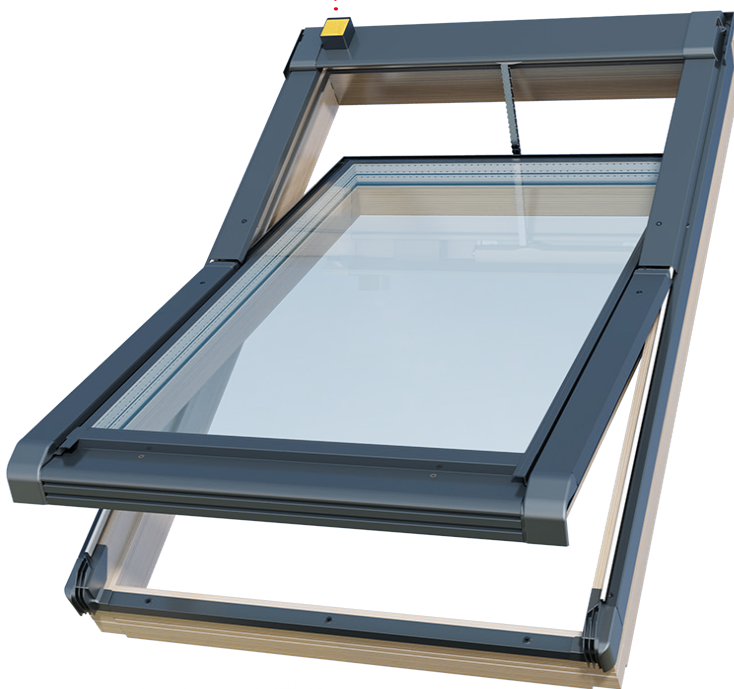
$U_g = 0,7 \text{ W/m}^2\text{K}$

**10 years**  
GUARANTEE  
FOR WINDOWS

**5 years**  
GUARANTEE  
FOR GLASS



rain sensor

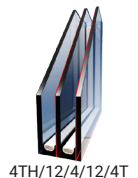


### GLAZING

Triple glazed unit  
gas - argon  
2 x warmspacer  
2 x low emission coat  
toughened pane

### PROFILE

Impregnated pine wood  
External colour RAL 7016



4TH/12/4/12/4T

Rain sensor

4 gaskets

Roof pitch 15°-90°



### CONTROL:

- Direct remote control using the uWiFi protocol - it is an interference - resistant, encrypted, energy-saving direct communication protocol developed by the BleBox R&D department at the 2.4GHz frequency (does not require a WiFi network to operate) between BleBox controllers
- Possibility of operation via remote control or application from anywhere in the world
- There are many personalization options in the application - opening/closing schedules
- Possibility to reprogram the action on the remote control
- Possibility to operate multiple devices with one device
- Heated rain sensor (can be turned off in the app)
- Possibility of integration with other Blebox devices
- Power supply 24V
- Tight control unit embedded in epoxy resin
- Distributed control system without a central hub
- The Blebox application is free, it is possible to purchase a remote control / wall switch as an additional accessory



Download on the  
**App Store**

GET IT ON  
**Google Play**

Window sizes:

glazing area [m²]	01	02	03	04	15	05	06	07	13	08	09	14	10	11	12
size symbol	01	02	03	04	15	05	06	07	13	08	09	14	10	11	12
window size: width × height [cm]	55×78	55×98	66×98	66×118	66×140	78×98	78×118	78×140	78×160	94×118	94×140	94×160	114×118	114×140	134×98
ISC IQ I22	✓	✓	✓	✓	✓	✓	✓	✓	✓	✓	✓	✓	✓	✓	✓

\* Parameter  $U_w$  - thermal permeability coefficient.

\*\* Details about the guarantee policy available at [www.okpol.com](http://www.okpol.com).