



*intelligent window*

# PGC IQ A1 with 2-glazing unit

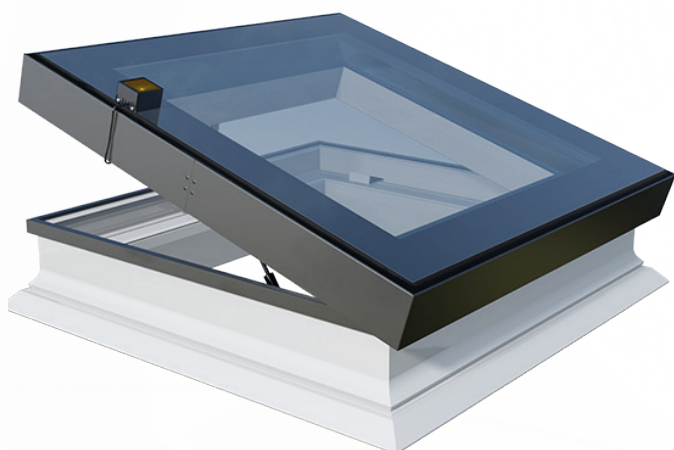
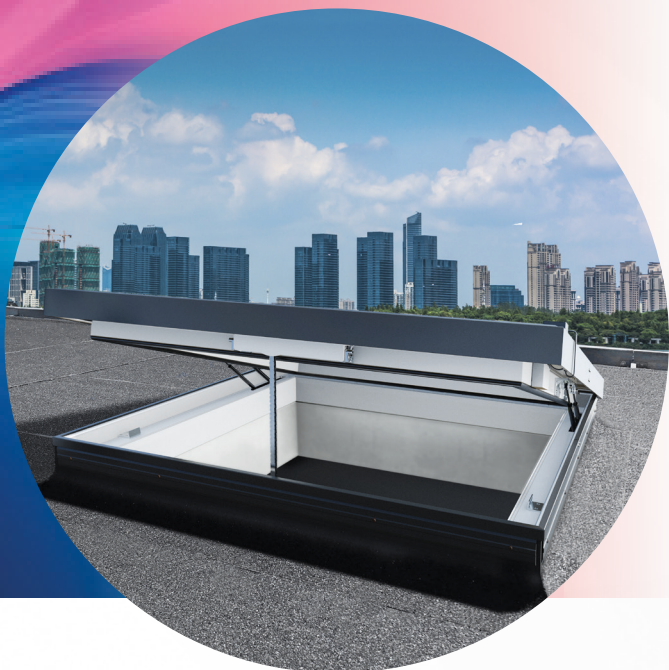
$U_w = 1,2 \text{ W/m}^2\text{K}^*$

GLAZING UNIT

$U_g = 1,0 \text{ W/m}^2\text{K}$

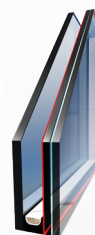
**10 YEAR**  
GUARANTEE  
FOR WINDOWS

**5 YEAR**  
GUARANTEE  
FOR GLASS



## GLAZING UNIT

single chamber  
noble gas - argon  
warm spacer  
low emission coat  
outer toughened pane  
laminated inner pane



6H/16/44.2T (AR)

## PROFILE

multi-chamber PVC profile in white colour, resistant to influence of atmospheric factors, filled with thermal insulation material

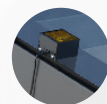


## ROOF PITCH 2°-15°\*\*\*



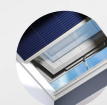
## RAIN SENSOR

Triggers automatic closing of the window sash, when rain falls on the sensor.



## ACCESSORIES

It is possible to order internal blinds for flat roof windows



\* Parameter  $U_w$  - thermal transmittance coefficient for the reference size according to EN ISO 10077-1 / EN ISO 10077-2.

\*\*Details about the guarantee policy available at [www.okpol.com](http://www.okpol.com)

\*\*\* Please note that rainwater may accumulate on the glass, which is not a product defect. The greater the angle of inclination of the roof, the less likely this phenomenon will occur.

## INNOVATIVE CONTROL DETAILS

// Direct control of the remote control on the uWiFi protocol - it is a resistant to interference, encrypted, energy-saving, developed by the BleBox R&D department direct communication protocol on the 2.4GHz frequency (does not need a WiFi network to operate) between BleBox controllers (e.g. between the uRemote remote control and the controller or inBox and the controller).

// Can be operated with a remote control or an application from anywhere in the world

// Many customization options in the application - opening/closing schedules

// Ability to reprogram actions on the remote control

// Ability to operate multiple devices with one remote control

// Heated rain sensor (can be turned off in the application) will automatically close the sash when it rains

// Ability to integrate with other Blebox devices (e.g. if you have an air quality sensor, you can set a program that will close the window after detecting air pollution)

// Prepared connector for the roller shutter - just plug it into the plug and it works

// 24 V power supply

// Sealed switchboard embedded in epoxy resin

// A distributed control system without a central hub



## Intuitive window control application



## Benefits of PGC IQ:



ENTERS  
FRESH  
AIR



RAIN  
SENSOR



NOISE  
REDUCTION  
ON 38 dB LEVEL



EASY  
INSTALLATION



REMOTELY/APP  
CONTROLLED



MAINTAINANCE  
FREE



WEATHER  
CONDITIONS  
RESISTANT

## Available sizes:

size symbol width x height [cm]	01P 60×60	02P 90×60	12P 120×60	03P 70×70	04P 80×80	05P 90×90	06P 120×90	07P 100×100	08P 150×100	09P 120×120	10P 140×140	11P 220×120
PGC IQ A1	✓	✓	✓	✓	✓	✓	✓	✓	✓	✓		✓